



HISTORIC LANGLEY ESTATE 6 Sturdee Lane Lovett Bay

Premium North facing property with deep water jetty & private beach

Far from the madding crowd yet less than an hour to the CBD, Langley provides an enviable lifestyle that many dream of but few enjoy. Adjoining a peaceful reserve with glorious views over Lovett Bay, Langley Estate comprises an historic 4 bedroom/2 bathroom house, a gorgeous Sandstone guest cottage & a large timber boathouse with launching ramp. Properties like Langley rarely come on the market & are much coveted.

- North Facing historic property
- Expansive views over Lovett Bay from both dwellings
- Private jetty and pontoon with deep water frontage
- Separate deep water boat mooring not far from jetty
- Best private sandy beach in the area (not affected by tides)
- Large boathouse with launching ramp
- Idyllic sunlit 4 bedroom, 2 bathroom house, built in 1924
- Beautiful craftsman built Sandstone visitors' cottage with kitchen & ensuite (much desired on Airbnb)
- Historic gazebo perfect for afternoon teas
- Borders a perpetual reserve which is a haven for wildlife (wallabies, birdlife etc)
- Just 45 minutes from Sydney Town Hall to Church Point and then 5 minute boat/water taxi ride from Church Point
- Water is scheme water (piped underwater from Church Point)

FOR SALE By Expressions of Interest

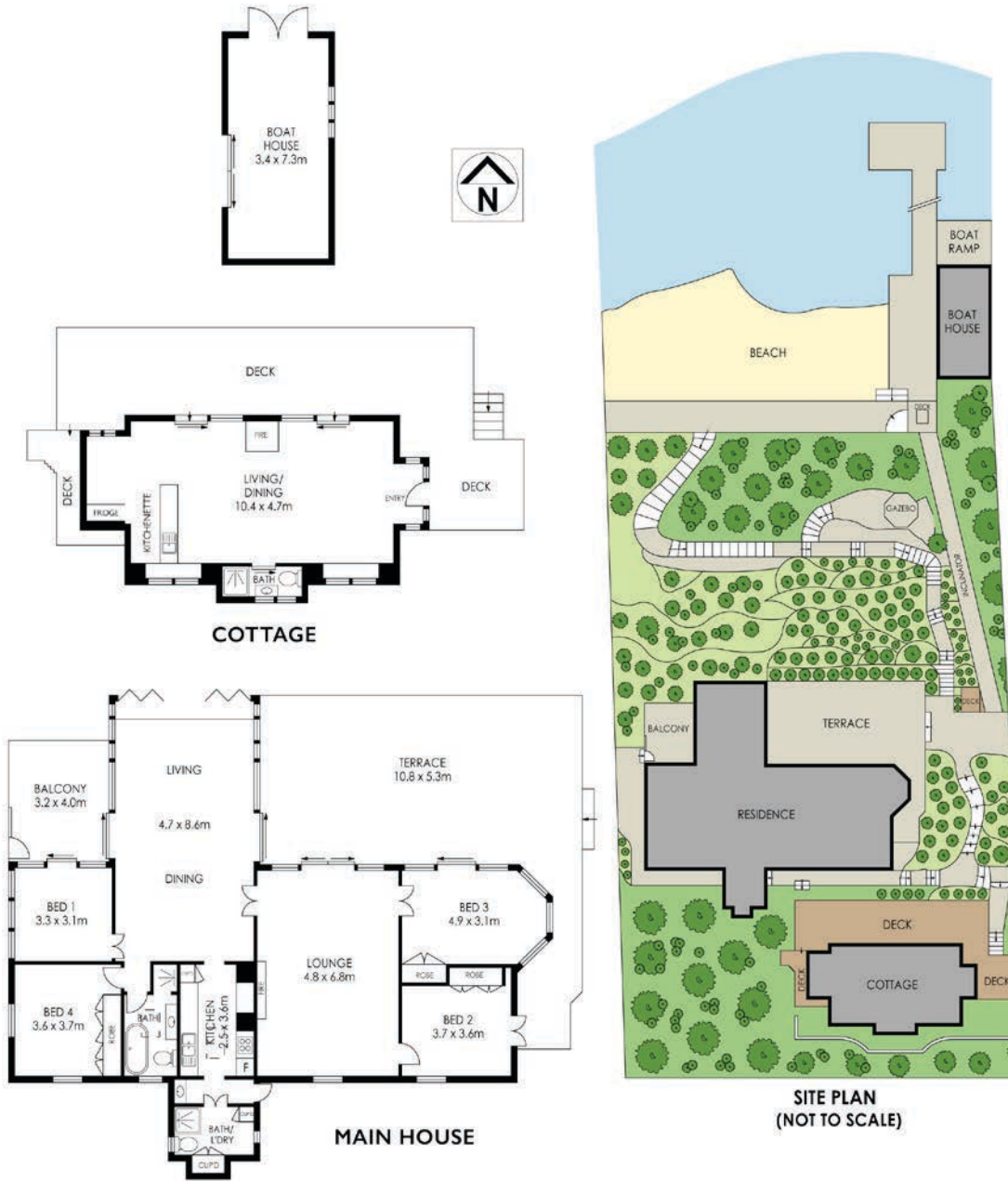
INSPECT By private appointment

DETAILS Colm O'Sullivan 0418 614 322
colm@suttonplacerealty.com.au

SUTTON PLACE
REALTY

bespoke property consultants

suttonplacerealty.com.au



We have obtained all information in this document from sources we believe to be reliable; however, we cannot guarantee its accuracy. Prospective purchasers are advised to carry out their own investigations.

